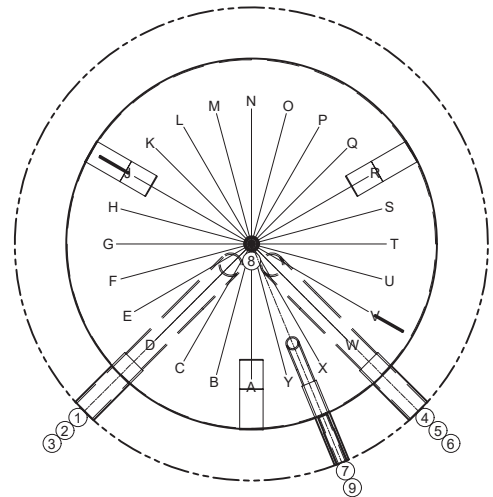


- 1.) Muffe mit Bogenrohr
- 2.) Muffe
- 3.) Muffe mit Bogenrohr
- 4.) Muffe mit Bogenrohr
- 5.) Muffe
- 6.) Muffe mit Bogenrohr
- 7.) Muffe
- 8.) Muffe
- 9.) Muffe mit Bogenrohr Entleerung



Es handelt sich um schematische Darstellungen - detaillierte Informationen entnehmen Sie bitte den folgenden Tabellen!

- Isolation:**
- Typ 300 und 500: 75 mm fix geschäumt mit Skai-Mantel silbergrau
 - Typ 600: 70 mm fix geschäumt mit Skai-Mantel silbergrau
 - Typ 750 bis 1250: 130 mm HeatBlocker-Isolation mit Polystyrol-Mantel silbergrau
 - Typ 1500 bis 3000: 160 mm HeatBlocker-Isolation mit Polystyrol-Mantel silbergrau

| Type | 300 | 500 | 600 | 750 | 1000 | 1250 | 1500 | 1750 | 2000 | 2500 | 3000 |
|-----------------------|-------------|-------------|-------------|-------------|-------------|-------------|-------------|-------------|-------------|-------------|--------|
| Inhalt PF | 274 l | 476 l | 557 l | 753 l | 933 l | 1250 l | 1419 l | 1727 l | 1920 l | 2447 l | 2923 l |
| ø ohne Iso. | - | - | - | 750 | 790 | 950 | 1000 | 1100 | 1100 | 1250 | 1300 |
| ø inkl. Iso. | 650 | 800 | 790 | 1012 | 1052 | 1212 | 1322 | 1422 | 1422 | 1572 | 1622 |
| Höhe ohne Iso | - | - | - | 1915 | 2115 | 2005 | 2045 | 2085 | 2285 | 2245 | 2470 |
| Höhe inkl. Iso. | 1615 | 1700 | 1950 | 2020 | 2220 | 2110 | 2170 | 2240 | 2410 | 2425 | 2630 |
| Kippmass | 1741 | 1879 | 2104 | 1927 | 2127 | 2022 | 2064 | 2107 | 2305 | 2301 | 2502 |
| EU-WHV ⁽²⁾ | 51,4 W ◻ B | 70,6 W ◻ B | 74,0 W △ B | 95,2 W △ B | 95,0 W △ B | 110,3 W △ B | 117,1 W △ B | 125,4 W | 118,7 W | 146,2 W | -- |
| CH-WV ⁽³⁾ | 1,2 kWh/24h | 1,7 kWh/24h | 2,2 kWh/24h | 2,3 kWh/24h | 2,3 kWh/24h | 2,6 kWh/24h | 2,8 kWh/24h | 2,7 kWh/24h | 2,8 kWh/24h | 3,5 kWh/24h | -- |
| Gewicht | 55 kg | 76 kg | 93 kg | 100 kg | 123 kg | 132 kg | 141 kg | 188 kg | 208 kg | 236 kg | 295 kg |

⁽¹⁾ 2500 bis 5000 Liter kurzfristig auf Anfrage lieferbar

^(2/3) Warmhalteverlust in W/h (EU) bzw. Wärmeverlust in kWh/24h (CH)

◻ Energieeffizienzklasse △ entspricht Energieeffizienzklasse

Anschlussdetails (Höhe in mm ab Unterkante Stehring bzw. Stellfüsse / Durchmesser Anschlüsse in Zoll)

| Type | 300 | | 500 | | 600 | | 750 | | 1000 | | 1250 | |
|------|------|------|------|------|------|----|------|----|------|----|------|----|
| A | --- | | --- | | --- | | 260 | 1" | 260 | 1" | 305 | 1" |
| B | *200 | 1 ½" | *260 | 1 ½" | *250 | 2" | 300 | 2" | 300 | 2" | 350 | 2" |
| C | *200 | 1 ½" | *260 | 1 ½" | *250 | 2" | 300 | 2" | 300 | 2" | 350 | 2" |
| D | 200 | ½" | 260 | ½" | 350 | ½" | 400 | ½" | 400 | ½" | 420 | ½" |
| E | 580 | ½" | 640 | ½" | 600 | ½" | 650 | ½" | 700 | ½" | 700 | ½" |
| F | 580 | 1 ½" | 640 | 1 ½" | 700 | 2" | 750 | 2" | 800 | 2" | 800 | 2" |
| G | 580 | 1 ½" | 640 | 1 ½" | 700 | 2" | 750 | 2" | 800 | 2" | 800 | 2" |
| H | 955 | ½" | 1015 | ½" | 1050 | ½" | 1100 | ½" | 1200 | ½" | 1150 | ½" |
| I | 955 | 1 ½" | 1015 | 1 ½" | 1150 | 2" | 1200 | 2" | 1300 | 2" | 1250 | 2" |
| J | 955 | 1 ½" | 1015 | 1 ½" | 1150 | 2" | 1200 | 2" | 1300 | 2" | 1250 | 2" |
| K | --- | | --- | | 1250 | ½" | 1300 | ½" | 1400 | ½" | 1350 | ½" |
| L | 1335 | ½" | 1395 | ½" | 1500 | ½" | 1550 | ½" | 1750 | ½" | 1600 | ½" |
| M | 1335 | 1 ½" | 1395 | 1 ½" | 1600 | 2" | 1650 | 2" | 1850 | 2" | 1700 | 2" |
| N | 1335 | 1 ½" | 1395 | 1 ½" | 1600 | 2" | 1650 | 2" | 1850 | 2" | 1700 | 2" |
| O | 1515 | 1 ½" | 1600 | 1 ½" | 1850 | 2" | 1890 | 1" | 2090 | 1" | 1980 | 1" |

*mit Schicht-U

| Type | 1500 | | 1750 | | 2000 | | 2500 | | 3000 | |
|------|------|----|------|----|------|----|------|----|------|------|
| A | 325 | 1" | 350 | 1" | 350 | 1" | 370 | 1" | 400 | 1 ¼" |
| B | 350 | 2" | 400 | 2" | 400 | 2" | 400 | 2" | 450 | 2" |
| C | 350 | 2" | 400 | 2" | 400 | 2" | 400 | 2" | 450 | 2" |
| D | 450 | ½" | 500 | ½" | 480 | ½" | 530 | ½" | 550 | ½" |
| E | 700 | ½" | 750 | ½" | 800 | ½" | 800 | ½" | 850 | ½" |
| F | 800 | 2" | 850 | 2" | 900 | 2" | 900 | 2" | 950 | 2" |
| G | 800 | 2" | 850 | 2" | 900 | 2" | 900 | 2" | 950 | 2" |
| H | 1150 | ½" | 1150 | ½" | 1300 | ½" | 1300 | ½" | 1450 | ½" |
| I | 1250 | 2" | 1250 | 2" | 1400 | 2" | 1400 | 2" | 1550 | 2" |
| J | 1250 | 2" | 1250 | 2" | 1400 | 2" | 1400 | 2" | 1550 | 2" |
| K | 1350 | ½" | 1350 | ½" | 1500 | ½" | 1500 | ½" | 1650 | ½" |
| L | 1600 | ½" | 1600 | ½" | 1800 | ½" | 1800 | ½" | 1950 | ½" |
| M | 1700 | 2" | 1700 | 2" | 1900 | 2" | 1900 | 2" | 2050 | 2" |
| N | 1700 | 2" | 1700 | 2" | 1900 | 2" | 1900 | 2" | 2050 | 2" |
| O | 2020 | 1" | 2060 | 1" | 2260 | 1" | 2245 | 1" | 2450 | 1" |